

## ARROWTOWN SHOWHOME

**This Showhome has now sold, however see below for further details on this home and inspiration and idea's to design and build your home with Next Edition.**



House Size: 320m<sup>2</sup>  
Land: 908m<sup>2</sup>

### **Features:**

- 4 Bedrooms
- 3 Bathrooms
- Separate WC
- Designer Kitchen with Bosch Appliances
- Fitted Joinery cabinetry
- Inbuilt Marantz Audio System
- Outdoor Escea Gas Fire
- Innovision Security System

### **Heating:**

- Underfloor Heating upstairs
- Diesel Boiler to run underfloor, radiators and hotwater
- Heatpump in Living
- Escea Gas Fire in Separate Living

Home designed for passive solar gain, light boxes around lighting to minimize heat loss. Thermally backed curtains, Double Glazing with Argon Gas and Thermally Broken Joinery and above standard Pink Batts insulation in walls and ceiling. The Gas fire in separate living is one of highest kilowatt outputs available.

### **Location:**

The house is located on Advance Terrace the ridge above Arrowtown, a block from the school overlooking the stunning Wakatipu basin and Michael Hill Golf Course.

### **Design:**

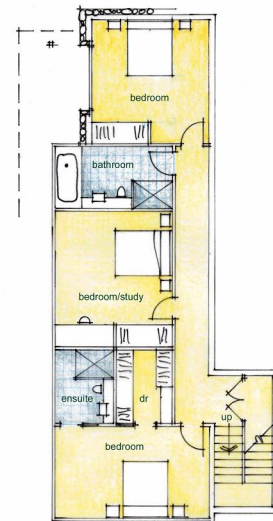
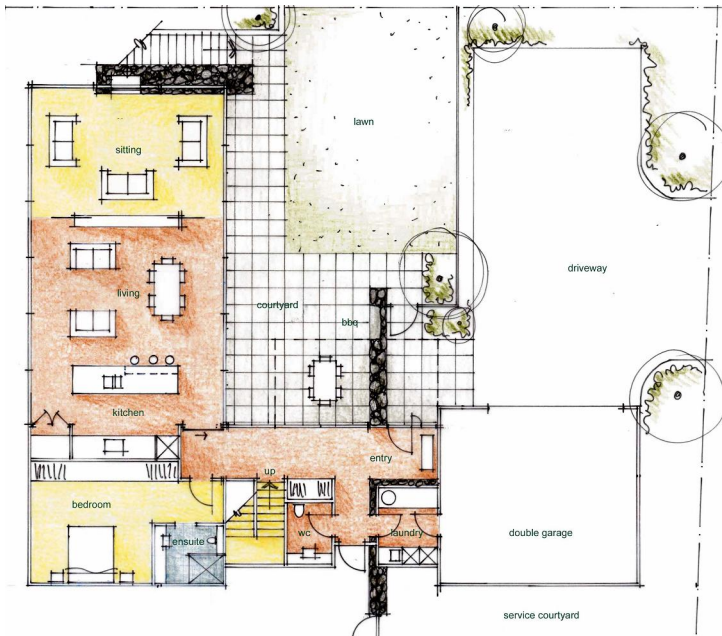
The Architectural home is designed to make the most of the stunning views whilst still capturing as much sun as possible for passive solar gain with a sheltered northfacing courtyard.

**This stunning home has now Sold.**

# LIVE THE LIFE YOU'VE IMAGINED



**Next Edition** is a building company based in Southern Lakes, founded on the experience of a small team of building professionals. With a focus on healthy, sustainable building the Next Edition team lead their clients through the building process from design to completion. We would also welcome the opportunity to price your plans and assist you with a professional down to earth building experience.



**Contact:** Brent Elliot, Next Edition 0272017187 or 0508 Next Edition

**NEXTEDITION** building for life